

Deuxieme Recueil
de
DOUZE VALSES

Pour
Lyre ou Guitarre

Composées Executées

Et Dediées à

Monsieur le Comte Arborio

Par

CH....DE MELLIANT

Prix l^e. 50^c.

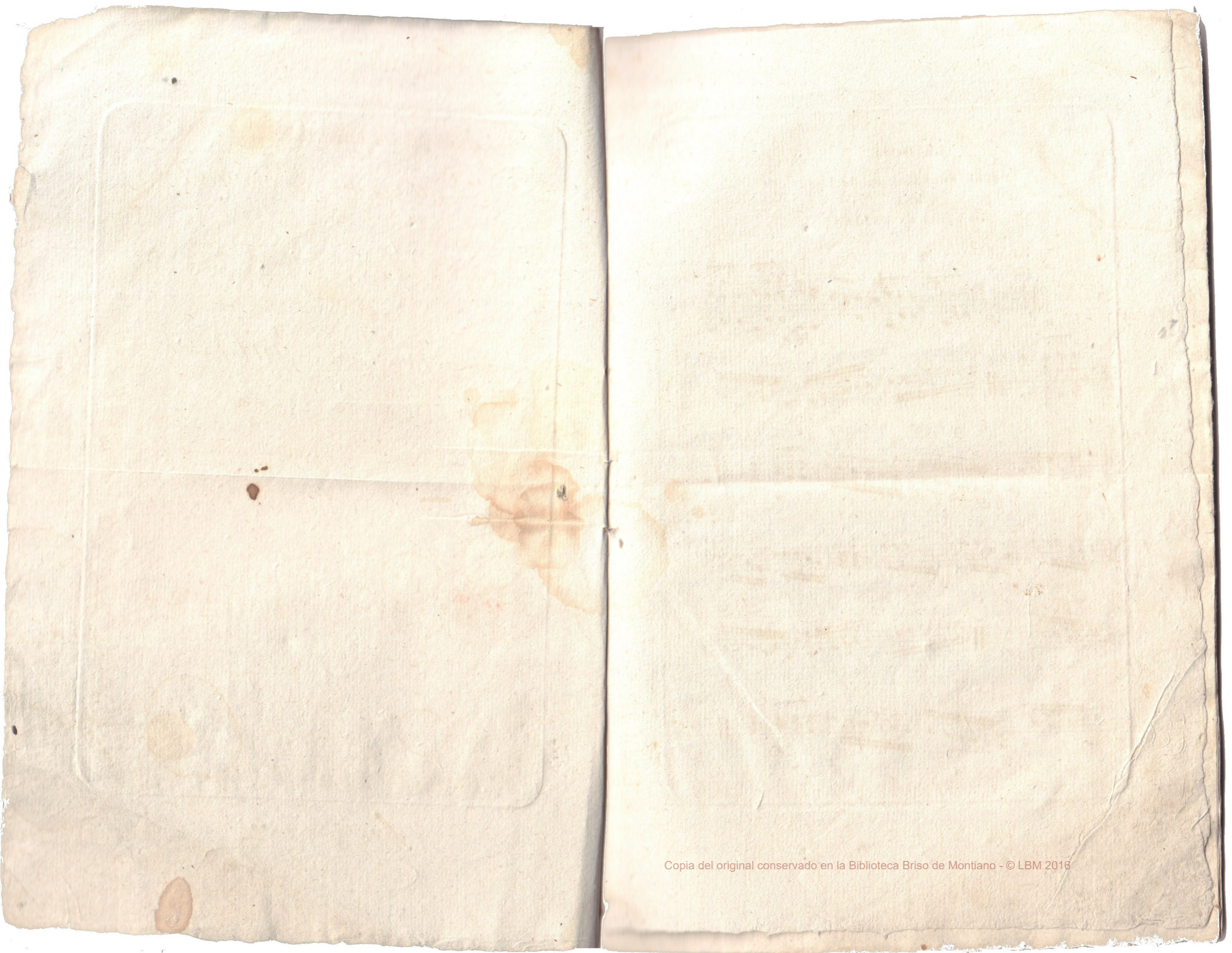
A PARIS

Chez **JOUVE**, M^d de Musique et de Cordes de Naples et
Facteur d'Instrumens, Palais du Tribunal galerie de Pierre
N^o 96. coté du Péron.

(Ecrit par Jeanne)

36

Jouve



LA ROSE

VALESE Pour Guitare ou Lyre

PAR

CH de MÉLIANT

1.
VALESE

Musical score for 'LA ROSE' in 3/8 time, key of D major. The score consists of seven staves of music. It begins with a forte (f) dynamic and ends with a piano (p) dynamic. The piece concludes with a double bar line and repeat dots.

LE LIS

VALESE Pour Guitare ou Lyre

PAR

CH de MÉLIANT

2.
VALESE

Musical score for 'LE LIS' in 3/8 time, key of D major. The score consists of seven staves of music. It begins with a forte (f) dynamic and ends with a piano (p) dynamic. The piece concludes with a double bar line and repeat dots.

L'HORTENSIA
VALE Pour Guitare ou Lyre
PAR
CH..... de MÉLIANT

3.^{me}
VALE

Minore

Magiore

Detailed description: This page contains the musical score for 'L'HORTENSIA', a waltz for guitar or lyre. It consists of seven staves of music in treble clef with a key signature of one sharp (F#) and a 3/8 time signature. The score begins with a treble clef, a sharp sign, and a 3/8 time signature. The first staff is labeled '3.^{me} VALE'. The music features a mix of eighth and sixteenth notes, often beamed together. A double bar line with repeat dots appears after the second staff. The third staff continues the melody. The fourth staff includes the instruction 'Minore' above the staff. The fifth staff continues the piece. The sixth staff includes the instruction 'Magiore' above the staff. The seventh staff concludes the piece with a double bar line and repeat dots.

L'ŒILLET
VALE Pour Guitare ou Lyre
PAR
CH..... de MÉLIANT

4.^{me}
VALE

3.^e p^{on}

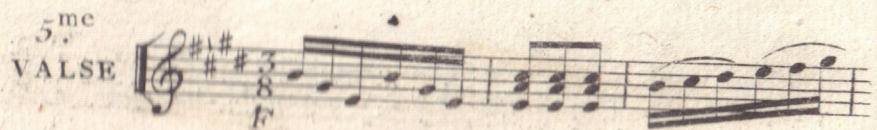
fz

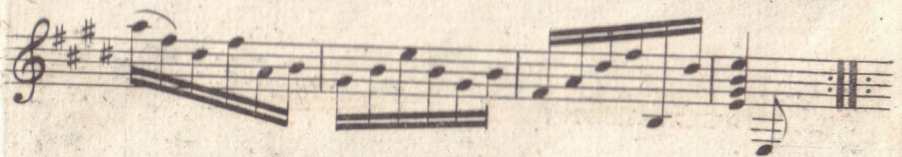
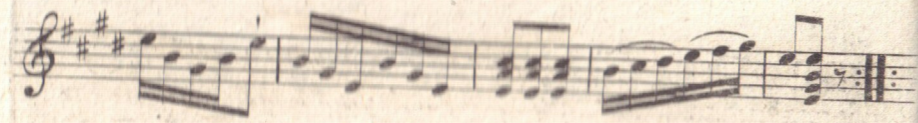
Minore

dol 3.^e p^{on}

Detailed description: This page contains the musical score for 'L'ŒILLET', a waltz for guitar or lyre. It consists of seven staves of music in treble clef with a key signature of one sharp (F#) and a 3/8 time signature. The score begins with a treble clef, a sharp sign, and a 3/8 time signature. The first staff is labeled '4.^{me} VALE'. The music features a mix of eighth and sixteenth notes, often beamed together. A double bar line with repeat dots appears after the second staff. The third staff continues the melody. The fourth staff includes the instruction '3.^e p^{on}' above the staff. The fifth staff includes the instruction 'fz' above the staff. The sixth staff includes the instruction 'Minore' above the staff. The seventh staff includes the instruction 'dol 3.^e p^{on}' above the staff. The piece concludes with a double bar line and repeat dots.

LA TULIPE
Valse Pour Guitare ou Lyre
PAR
CH..... de MÉLIANT

5^{me}
Valse 




dol 



LA PENSÉE
Valse Pour Guitare ou Lyre
PAR
CH..... de MÉLIANT

6^{me}
Valse 



LA GRENADE
Valse Pour Guitare ou Lyre
PAR
CH..... de MÉLIANT

7^{me}
Valse

Musical score for 'LA GRENADE' in 3/8 time, key of G major. The score consists of six staves of music. The first staff begins with a treble clef, a key signature of one sharp (F#), and a 3/8 time signature. The music features a rhythmic pattern of eighth and sixteenth notes. The second staff includes a repeat sign. The third staff contains the instruction 'Minore' above the staff and a dynamic marking 'f' below it. The fourth staff has a dynamic marking 'dol' below it. The fifth staff continues the melodic line. The sixth staff ends with a double bar line and a dynamic marking 'rf' below it.

LA VIOLETTE
Valse Pour Guitare ou Lyre
PAR
CH..... de MÉLIANT

8^{me}
Valse

Musical score for 'LA VIOLETTE' in 3/8 time, key of G major. The score consists of six staves of music. The first staff begins with a treble clef, a key signature of one sharp (F#), and a 3/8 time signature. The music features a rhythmic pattern of eighth and sixteenth notes. The second staff includes a dynamic marking '3^e p^{on}' below it. The third staff contains a dynamic marking 'f' below it. The fourth staff continues the melodic line. The fifth staff includes a dynamic marking '7^e p^{on}' below it. The sixth staff ends with a double bar line.

LA TUBÉREUSE
Valse Pour Guitare ou Lyre
PAR
CH..... de MÉLIANT

9^{me}
Valse

Musical score for 'LA TUBÉREUSE' in 3/8 time, key of B-flat major. It consists of six staves of music. The first five staves contain the main melody with various ornaments and phrasing. The sixth staff shows a chord progression with a dynamic marking 'F' and a fermata over the final chord. A dashed line below the sixth staff indicates a 5^e position and a 3^e position.

LA BELLE-de-NUIT
Valse Pour Guitare ou Lyre
PAR
CH..... de MÉLIANT

10^{me}
Valse

Musical score for 'LA BELLE-de-NUIT' in 3/8 time, key of D major. It consists of six staves of music. The first five staves contain the main melody with various ornaments and phrasing. The sixth staff shows a chord progression with a dynamic marking 'F' and a fermata over the final chord.

LE SOUCI
VALSE Pour Guitare ou Lyre
PAR
CH..... de MÉLIANT

11^{me}
VALSE

Musical score for 'Le Souci' in G major, 3/8 time. It consists of six staves of music. The first staff begins with a treble clef, a key signature of one sharp (F#), and a 3/8 time signature. The music features a mix of eighth and sixteenth notes, often beamed together, with some rests. The piece concludes with a double bar line and repeat dots.

LE MYRTE
VALSE Pour Guitare ou Lyre
PAR
CH..... de MÉLIANT

12^{me}
VALSE

Musical score for 'Le Myrte' in G major, 3/8 time. It consists of eight staves of music. The first staff begins with a treble clef, a key signature of one sharp (F#), and a 3/8 time signature. The music is characterized by continuous eighth-note patterns. A '3^e p^{on}' (triple) marking is present in the first staff. A 'ralen.' (ritardando) marking is located at the end of the seventh staff. The piece ends with a double bar line and repeat dots.

L'ÉPINE
Pour Guitare ou Lyre
PAR CH.... de MÉLIANT

Sauteuse

Handwritten musical score for 'L'ÉPINE' in G major, 6/8 time, for guitar or lyre. The score consists of ten staves of music. The first staff is marked 'Sauteuse'. The piece features a melodic line with a mix of eighth and sixteenth notes, and a bass line with chords and single notes. There are two first and second endings marked '1.º' and '2.º' in the seventh and ninth staves respectively. The paper is aged and shows some staining.